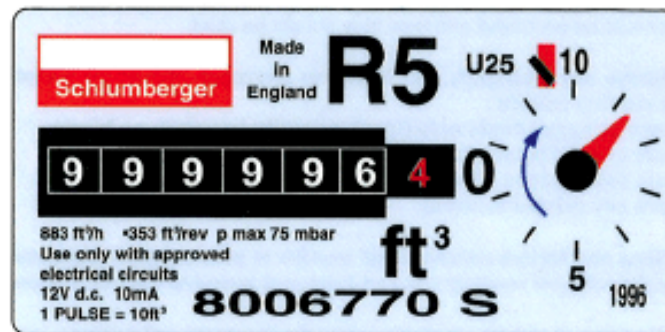


How to Read Your Meter

Record principal digits only (black on white/ or white on black)

- Ignore any red digits
- Ignore any digits in a red surround
- Ignore any printed or fixed zero(s)
- The reading units of x100 will be taken into account



In this instance, the meter reading would be: 999996

Please email your meter reads to meterreadings.solutions@engie.com quoting your MPRN (Meter Point Reference Number) and your site ID, both of which appear on your invoice plus your meter serial number which appears on your gas meter. If you're not sure of these please contact a member of the customer service team on 0800 130 3600.